



Compact Tractor Attachments

For Compact Tractors with Universal Skid-Steer Hitch

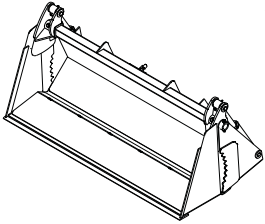


PALADIN LIGHT CONSTRUCTION

Bradco P.O. Box 266, Delhi, IA 52223 PH: (800)922-2981 FX: (563)922-2700
Harley 1805 2nd Avenue SW, Jamestown, ND 58402 PH: (800)437-9779 FX: (701)252-1978
FFC 100 East Lee Road, Lee, IL 60530 PH: (800) 747-2132 FX: (815) 824-2620
www.paladinbrands.com

4-in-1 Bucket, Adapter Plates & Auxiliary Kit

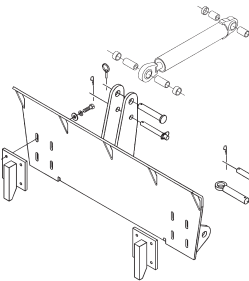
4-in-1 Multi-Purpose Bucket (Bradco)



- 60" and 72" available
- Functions as a loader bucket, clam, grapple, dozer, box scraper, & bottom dump bucket
- Strong hinges & pins to distribute load
- 100,000 yield light weight material construction allows more load capacity
- Bottom dump buckets allows the operator to dump into high side board trucks
- Short floor design allows for more break-out force
- Optional bolt-on tooth bar available

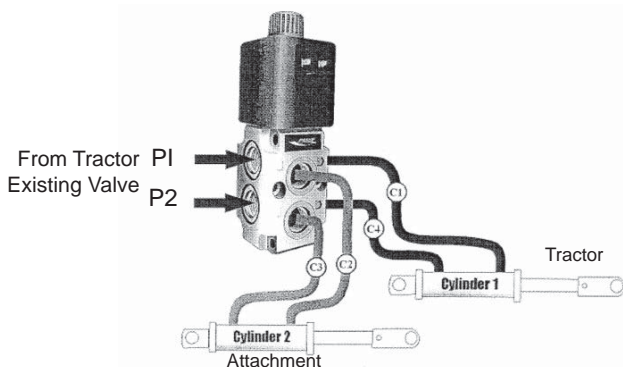
Specifications	60"	72"
Width (overall)	60"	72"
Height (overall)	27"	27"
Length without teeth (overall)	28"	28"
Front Length without teeth	15"	15"
Rear Length	14"	14"
Grapple Opening	28"	28"
Weight (lbs)	360	425
Maximum Capacity (sq. ft.)	11.2	13.5
Maximum Clam Force (lbs)	3,600	3,600

Adapter Plate (Bradco)



- Permits the use of skid-steer attachments such as pallet forks and landscape tools on tractor 3-point
- Rugged design and positive locking wedges
- Quickly pins to tractor 3-point and wedge attaches to your skid-steer attachments
- Top link cylinder kit replaces the tractor top link for hydraulically positioning attachments

Auxiliary Hydraulic Conversion Kit (Bradco)



- Use to convert existing tractor loader 2-function hydraulics to allow a 3rd function for controlling various hydraulic accessory attachments ie. hydraulic grapples and multipurpose buckets
- Plumb into existing loader bucket cylinder circuit
- Due to variety of tractor combinations, kit does not include valve mounting bracket or hydraulic hoses

Bradco
 PH: (800) 922-2981
 FX: (563) 922-2700
 P.O. Box 266
 Delhi, IA 52223-0266
 United States of America

FFC
 PH: (800) 747-2132
 FX: (815) 824-2620
 100 East Lee Road
 Lee, IL 60530
 United States of America

Harley
 PH: (800) 437-9779
 FX: (701) 252-1978
 1805 2nd Ave. S.W., P.O. Box 230
 Jamestown, ND 58402
 United States of America

www.paladinbrands.com

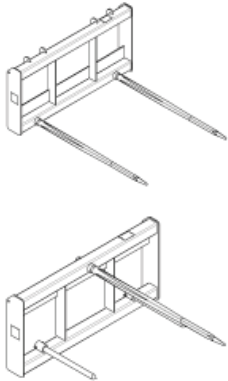


PALADIN LIGHT CONSTRUCTION

Bale Spike, Grapples & Pallet Fork

Bale Spike

(FFC)

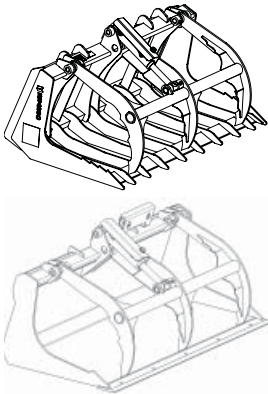


- Built to lift, transport, & stack round or square bales of organic materials
- Designed to fit a large number of compact tractors
- Provides excellent visibility
- Keeps bale closer to machine for safe handling

Specifications	#10700	#10704
Width (overall)	45.3"	45.3"
Height (overall)	22.4"	23.1"
Depth (overall)	50.5"	50.5"
Spears Length	49.0"	49.0"
Shipping Weight (lbs)	145	155
Bale Capacity (lbs)	2,000	3,000
Main Spear	(1) 1.75" x 49"	(2) 1.75" x 49"
Stabilizer Spear	(2) 1.25" x 20"	(1) 1.25" x 20"
Type of Bale	Round	Round or Square

Grapples

(Bradco)



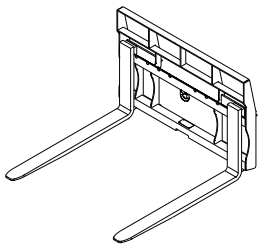
- Aggressive grapple made of high strength steel for maximum performance and durability
- Cylinder guard design protects cylinder while preventing build-up of debris
- Great for cleaning up and transporting branches, brush, and limbs
- Provides excellent visibility

* Contact factory for loader auxiliary hydraulic kit

Specifications	Bush		Scrap
Width (overall)	48"	54"	48"
Height (overall)	25.5"	25.5"	25.6"
Length (overall)	30.5"	30.5"	30.0"
Tine Spacing	5.7"	5.7"	NA
Grapple Opening	29.0"	29.0"	28.2"
Clamping Force (lbs)	1,100	1,100	1,100
Grapple Teeth	3	3	3
Cylinders	1	1	1
Weight (lbs)	275	285	330

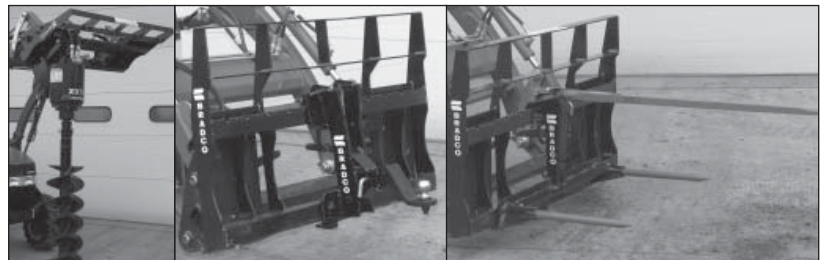
Pallet Fork

(Bradco)



- High strength lightweight frame for larger pay load
- Open load guard for excellent visibility
- 36", 42", & 48" tines available
- Patented load retention ring
- 2,300 rated capacity at 24" load center
- Class II ITA fork with positioning lock pin
- Option items include Auger Mount, Bales Spear, and 2" Receiver Hitch

Specifications	
Width (overall)	45.2"
Height (overall)	5.6"
Adjustable Spacing - Maximum	42.5"
Weight (lbs)	265



Bradco
PH: (800) 922-2981
FX: (563) 922-2700

P.O. Box 266
Delhi, IA 52223-0266
United States of America

FFC
PH: (800) 747-2132
FX: (815) 824-2620

100 East Lee Road
Lee, IL 60530
United States of America

Harley
PH: (800) 437-9779
FX: (701) 252-1978

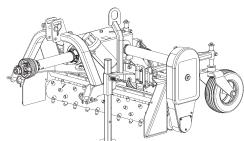
1805 2nd Ave. S.W., P.O. Box 230
Jamestown, ND 58402
United States of America



Rakes & Rock Bucket

TM4 & TM5 Rakes

(Harley)

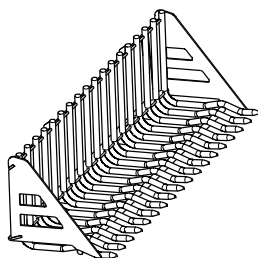


- 4ft and 5ft available
- Prepare landscape in tight places where maneuverability is needed
- Increase the value of your compact tractor with greater versatility & job opportunities
- Adjustable polyurethane barrier above the roller allows you to quickly react to soil moisture conditions - from opening up muddy sites to finishing with the perfect seedbed.
- Grade, level, rake & remove debris. Pulverize & prepare seedbed, dethatch or remove old lawns & weeds...all with one tool!

Specifications	TM-4	TM-5
Weight (lbs)	550	575
Length (overall)	49"	48"
Width (overall)	57"	64"
Raking Width	48"	56"
Raking Width (full angle)	46"	54"
Angle Roll R or L	15°	15°
Roll-Back Barrier Range	5/16" to 3-3/16"	5/16" to 3-3/16"
HP Range	15-22	18-35
3-Point Attachment	Limited Cat. 1	Limited Cat. 1

Rock Bucket

(Bradco)



- Designed to collect rocks and debris, allowing the soil to sift through
- Rake design allows for fast clean-up, ground leveling, & gathering materials away from buildings & obstructions
- Leave the dirt & pay less at the land fill!
- Exclusive Bradco engineered alloy allows for higher strength and impact resistance

Specifications	
Width (overall)	55.3"
Height (overall)	21.5"
Depth (overall)	23.5
Tine Spacing (between tines)	2.0"
Number of Tines	18
Tine Rod Diameter	1.13"
Weight (lbs)	278

Bradco
PH: (800) 922-2981
FX: (563) 922-2700

P.O. Box 266
Delhi, IA 52223-0266
United States of America

FFC
PH: (800) 747-2132
FX: (815) 824-2620

100 East Lee Road
Lee, IL 60530
United States of America

Harley
PH: (800) 437-9779
FX: (701) 252-1978

1805 2nd Ave. S.W., P.O. Box 230
Jamestown, ND 58402
United States of America



Trencher & Vibratory Plow

Trencher 612

(Bradco)



- 20 to 45 hp Cat. 1 hydrostatic tractor
- Chain reduction drive system
- Boom lengths from 30" to 60"
- Chain widths from 6" to 12"
- 50,000 double standard, anti-back flex chain

Maximum Trenching Depths Based on Trench Width

6" wide chain	60" deep
8" wide chain	48" deep
10" wide chain	36" deep
12" wide chain	30" deep

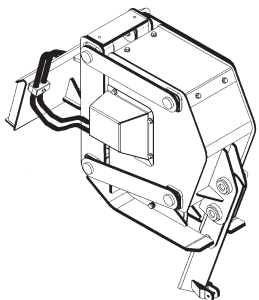
Specifications

612

Trench Depth	30", 36", 48", 60"
Trench Width	6", 8", 10", 12"
Trenching Angle	65°
Auger Diameter	24"
Width (overall)	43"
Headshaft Height (auger at grade)	12"
3-point length to headshaft	24"
Spoil Discharge Reach	29"
Transport Height	Varies
Center of Trencher to End of Auger	27"
Trencher Length with 4ft boom	96"

Vibratory Plow (VP10)

(Bradco)



- Hydraulic motor includes high-pressure seal and internal valve for extended motor life & performance
- Two motor size options for maximum performance for almost any loader
- Low-maintenance exciter unit generates up to 5,000 lbs of force
- Offers steering, removable pressure foot & cutler wheel, and less ground disturbance
- Optional plow mounted cable reel and blade choices

Specifications

VP10

Width (overall)	25"
Length (overall)	36"
Height (overall)	27"
flow requirements (GPM)	8 to 14
Operating Pressure	1,500 to 3,000
Weight (lbs)	510

Bradco
PH: (800) 922-2981
FX: (563) 922-2700

P.O. Box 266
Delhi, IA 52223-0266
United States of America

FFC
PH: (800) 747-2132
FX: (815) 824-2620

100 East Lee Road
Lee, IL 60530
United States of America

Harley
PH: (800) 437-9779
FX: (701) 252-1978

1805 2nd Ave. S.W., P.O. Box 230
Jamestown, ND 58402
United States of America

www.paladinbrands.com

 BRADCO

 FFC

 HARLEY

 MAJOR

 MCMILLEN

 SWEEPSTER

PALADIN LIGHT CONSTRUCTION

Thank You For Your Business!

Bradco

P.O. Box 266, Delhi, IA 52223

PH: (800) 922-2981 FX: (563) 922-2700

FFC

100 East Lee Rd, Lee, IL 60530

PH: (800) 747-2132 FX: (815) 824-2620

Harley

1805 2nd Avenue SW, Jamestown, ND 58402

PH: (800) 437-9779 FX: (701) 252-1978

www.paladinbrands.com



PALADIN LIGHT CONSTRUCTION